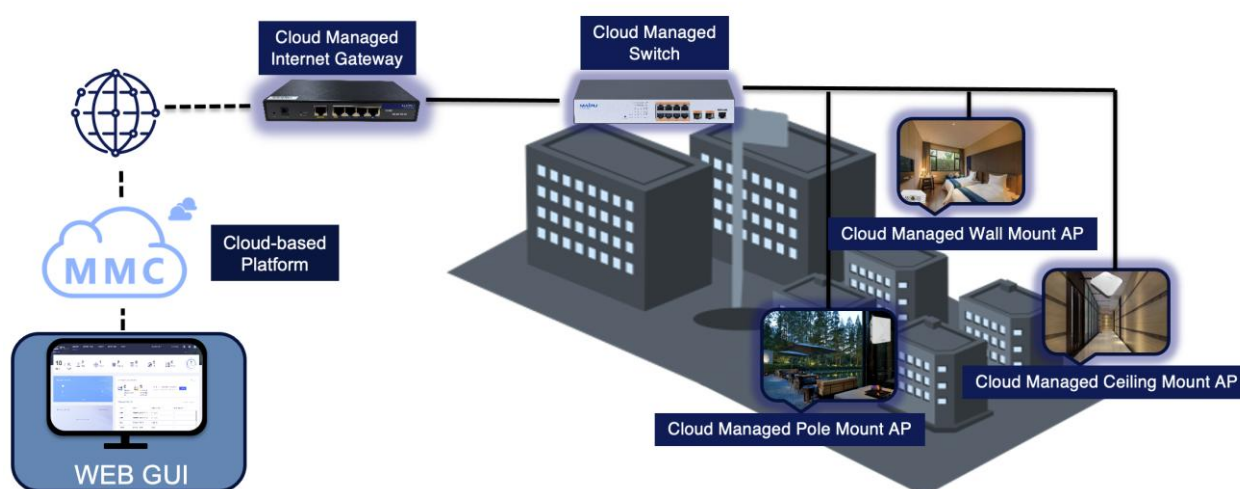


Maipu Managed Cloud(MMC)

Datasheet

Overview

Maipu MMC (Maipu Managed Cloud) is a revolutionary cloud management platform which supports unified management and configuration of Internet gateways, Aps, Routers and switches, etc. Maipu MMC is designed for SMB customers such as economic hotels, schools, chain stores, branch offices and other small-medium sized business. Maipu MMC is consisted of various management features, such as account management, configuration management, device management, alarm management, topology management, troubleshooting management, etc. The platform can significantly reduce the operation & maintenance cost for partners and customers. Compared with other managed cloud solution suppliers, Maipu MMC can be deployed on public cloud or private cloud which gives more choices for partners to centrally manage all the wireless related devices through internet.



Maipu Cloud Management Solution Architecture

Platform Highlights

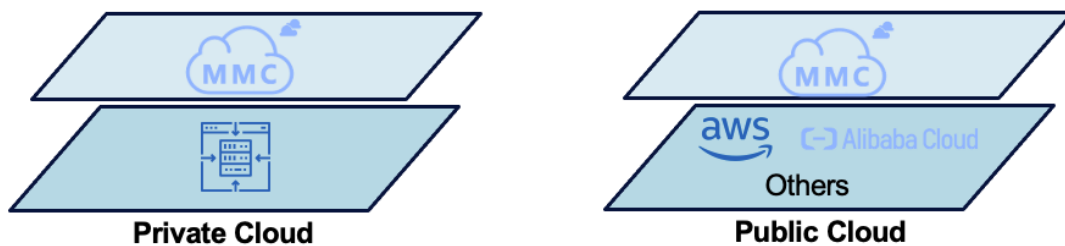
- **Centralized Cloud Management**

Getting a predictable operational expenditure (OPEX), rather than capital expenditures (CAPEX). All Internet Gateways, APs and Switches can be unified managed by Maipu cloud management platform (MMC) through internet.



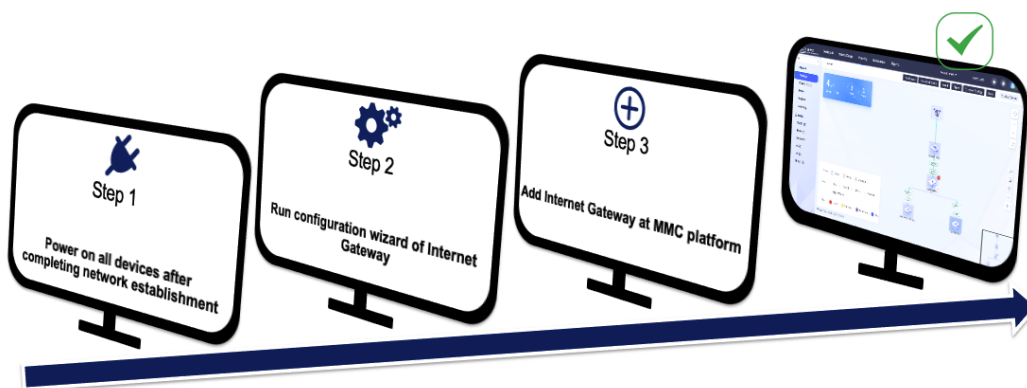
- **Flexible Cloud Deployment**

Compared with other managed cloud solution suppliers, Maipu MMC can be deployed on public cloud or private cloud which gives more choices for partners to centrally manage all the wireless related devices through internet.



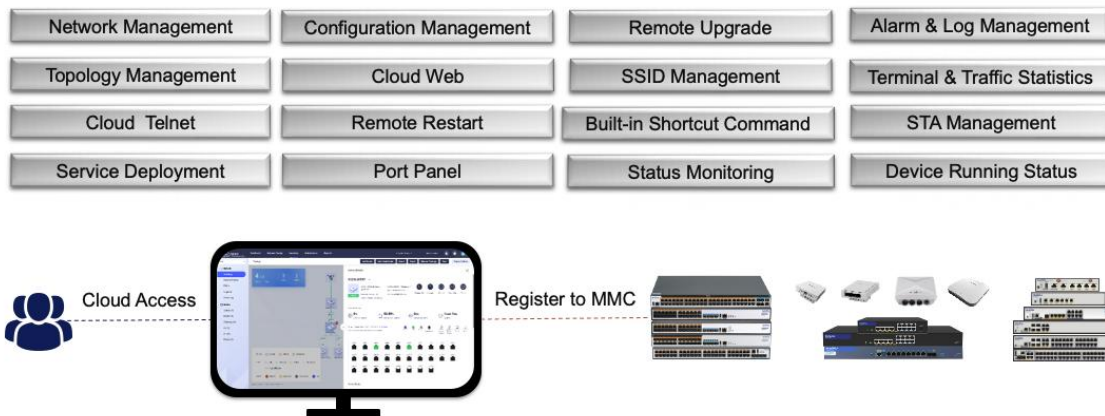
- **Quickly Cloud Service Provisioning**

The platform can significantly reduce the operation & maintenance cost for partners and customers. Wireless service and cloud service provisioning can be done within few minutes.



- **Intelligent Remote Maintenance via Cloud**

MMC is consisted of various management and maintenance features, such as network management, configuration management, topology management, device management, alarm management, SSID management, STA management, cloud web, cloud telnet and more.



Key Features

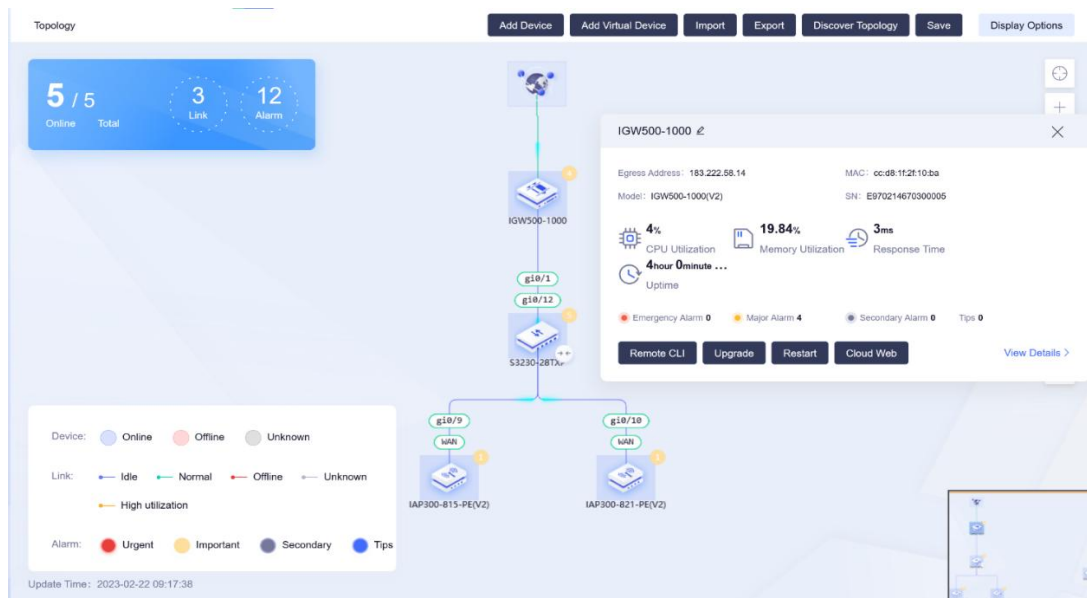
● Account Management

Maipu MMC adopts multi-tenant account management mode, which can establish multiple MSP accounts, and MSP can establish sub accounts for channels. If the subordinate channel wants to exit the management, MSP can withdraw the sub account or allocate the sub account to other accounts

Account	Status	Role	Managed Group	Alias	Phone Number	Email	Description	Operation
admin	--	Administrator	/Default organization/				Admin account	Modify
brown	Enable	Tenant	/Default organizati...	brown		brown@...		Modify Disable
david	Enable	Tenant	/Default organizati...	david		david@...		Modify Disable
naruvut@dtcl...	Enable	Tenant	/Default organizati...	naruvut...		naruvut...		Modify Disable
thane	Enable	Tenant	/Default organizati...	thane		thane...		Modify Disable
manus@aimg...	Enable	Tenant	/Default organizati...	manus...		manus...		Modify Disable
p.plakhi@tre...	Enable	Tenant	/Default organizati...	p.plakhi...		p.plakhi...		Modify Disable

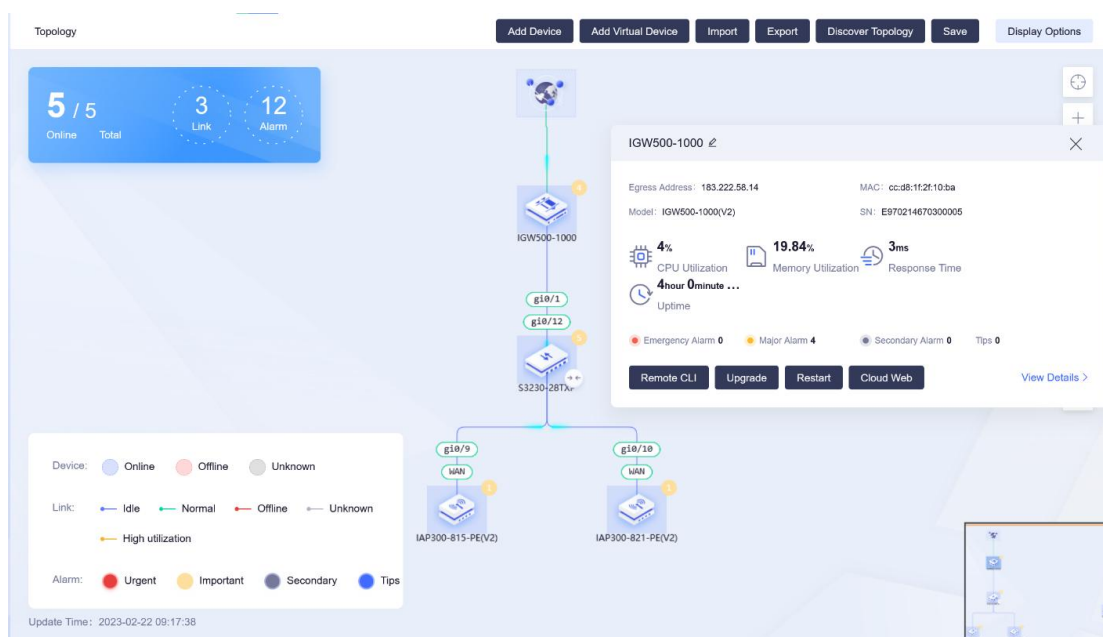
● Topology Management

After registering to Maipu MMC, network equipment can automatically generate network topology, and users can clearly understand the network status, such as line connection/disconnection, link congestion, device online/offline.



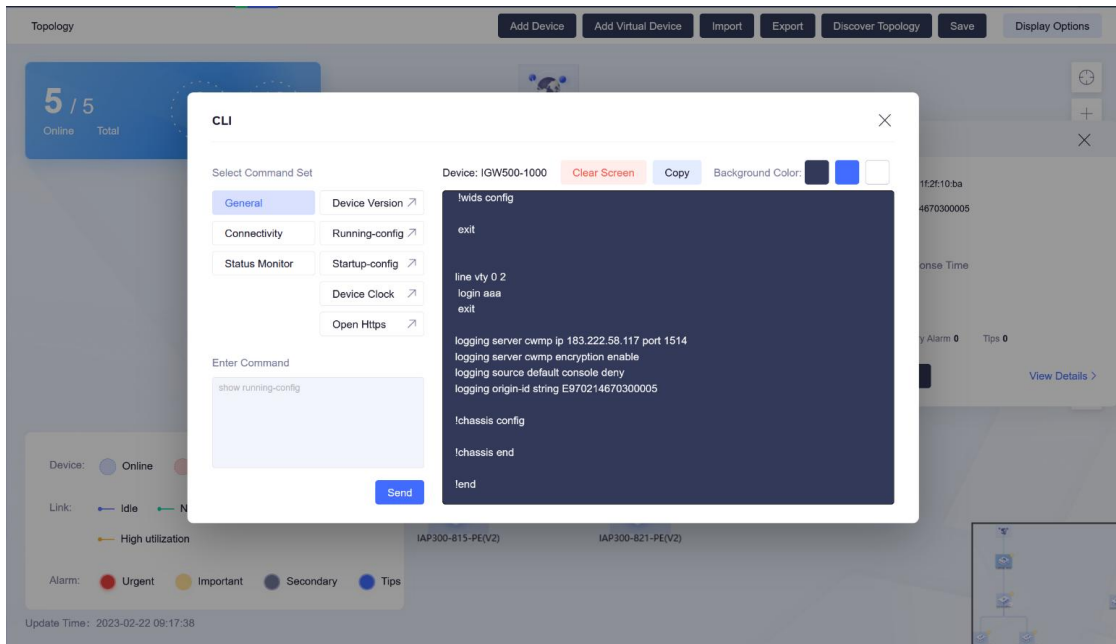
● Device Management

Click the device icon, and you can understand the detailed working status of the device, including the device online duration/CPU/memory and other information. You can also learn about the interface up/down and traffic of the device.



● Troubleshooting Management

Inbuilt with common CLI naming shortcuts, such as Running Config, System Version, Show IP Route, etc., users can collect basic device information and troubleshoot through these shortcut commands.



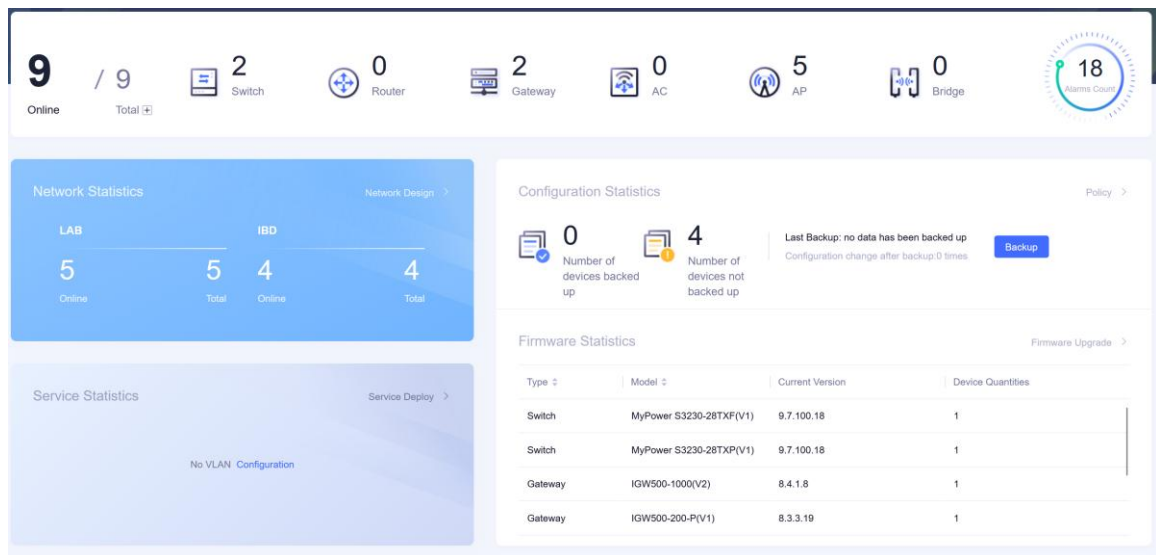
● Alarm Management

Collect device alarm information in real time, and the user can filter according to the alarm level and type. You can also customize the alarm level and set the thresholds for different alarm types.

<div> Group Select a group Start Time 2023-01-23 09:28 End Time 2023-02-22 09:28 Level All Name/SN </div>							
SN	MGMT Address	Egress Address	Content	Is Matched	Level	Device Name	Occurrence Time
E97021467...	169.254.169.254	183.222.58.14	MPU0 %PORTM...	Matched	Important	IGW500-1000	2023-02-20 16:20:52
E97021467...	169.254.169.254	183.222.58.14	MPU0 %DMM-SY...	Mismatched	Important	IGW500-1000	2023-02-20 16:12:48
E97021467...	169.254.169.254	183.222.58.14	MPU0 %LINK-LIN...	Matched	Important	IGW500-1000	2023-02-20 16:12:41
E97021467...	169.254.169.254	183.222.58.14	MPU0 %LINK-INT...	Mismatched	Important	IGW500-1000	2023-02-20 16:12:41
E97021467...	169.254.169.254	183.222.58.14	MPU0 %PORTM...	Matched	Important	IGW500-1000	2023-02-20 16:12:41
E97021467...	169.254.169.254	183.222.58.14	MPU0 %LINK-LIN...	Matched	Important	IGW500-1000	2023-02-20 16:12:37
E97021467...	169.254.169.254	183.222.58.14	MPU0 %LINK-INT...	Mismatched	Important	IGW500-1000	2023-02-20 16:12:37
E97021467...	169.254.169.254	183.222.58.14	MPU0 %PORTM...	Matched	Important	IGW500-1000	2023-02-20 16:12:37
E97021467...	169.254.169.254	183.222.58.14	MPU0 %LINK-LIN...	Matched	Important	IGW500-1000	2023-02-20 16:12:34
E97021467...	169.254.169.254	183.222.58.14	MPU0 %LINK-INT...	Mismatched	Important	IGW500-1000	2023-02-20 16:12:34
E97021467...	169.254.169.254	183.222.58.14	MPU0 %PORTM...	Matched	Important	IGW500-1000	2023-02-20 16:12:34

● Upgrade Management

Maipu MMC platform will automatically compare the version used by the device with the uploaded version, and prompt that a new version is available. Users can choose whether to upgrade the new version according to their own needs.



MMC Supported Models

Product Type	Product Series	Product Models
Internet Gateway	IGW500-500/1000/1500 Series	IGW500-1500, 1GW500-1000, IGW500-500
	IGW500-200/100 Series	IGW500-200, 1GW500-100
	IGW500-200/100 PoE Series	IGW500-200-P, IGW500-100-P
AP	IAP300 Series	Wall Mount: IAP300-815 Ceiling Mount: IAP300-821 Pole Mount: IAP300-826
Switch	IS230 Series	IS230-10TF, IS230-10TP, IS230-18TF, IS230-20TP, IS230-28TF, IS230-28TP
	S3230 Series	S3230-28TXF, S3230-28TXP, S3230-54TXF, S3230-54TXP
	S3330 Series	S3330-12TXF, S3330-12TXP, S3330-28TXF, S3330-28TXP, S3330-54TXF, S3330-54TXP, S3330-28GXF
	S4230 Series	S4230-30TXF, S4230-54TXF, S4230-36GTXF
	S4330 Series	S4330-30TXF, S4330-30TXP, S4330-54TXF, S4330-54TXP, S4330-54GXF, S4330-54TGXF
	IS580 Series	IS580-26XF, IS580-48XF
	IS660 Series	IS660-04, IS660-06

MMC Platform Hardware Specification

Node Scales	Recommended Server Hardware Specification				
Number of APs	CPU Core	Memory	HDD	Internet Bandwidth (Min.)	Server Number
2.5K	8 Core/2.4GHZ	16G	1T	10Mbps	1
2.5K-5K	12 Core/2.4GHZ	24G	1T-2T	25Mbps	2(Backup)
5K-10K	12 Core/2.4GHZ	24G	2T-4T	50Mbps	3(Cluster)
10K-20K	16 Core/2.4GHZ	24G	2T-4T	100Mbps	3(Cluster)

All rights reserved. Printed in the People's Republic of China.

No part of this document may be reproduced, transmitted, transcribed, stored in a retrieval system, or translated into any language or computer language, in any form or by any means, electronic, mechanical, magnetic, optical, chemical, manual or otherwise without the prior written consent of Maipu Communication Technology Co., Ltd.

Maipu makes no representations or warranties with respect to this document contents and specifically disclaims any implied warranties of merchantability or fitness for any specific purpose. Further, Maipu reserves the right to revise this document and to make changes from time to time in its content without being obligated to notify any person of such revisions or changes.

Maipu values and appreciates comments you may have concerning our products or this document. Please address comments to:

Maipu Communication Technology Co., Ltd
Maipu Mansion, No.16, Jiuxing Avenue
Hi-Tech Zone
Chengdu, Sichuan Province
P. R. China
610041
Tel: (86) 28-65544850,
Fax: (86) 28-65544948,
URL: [http:// www.maipu.com](http://www.maipu.com)
Email: overseas@maipu.com

All other products or services mentioned herein may be registered trademarks, trademarks, or service marks of their respective manufacturers, companies, or organizations.